



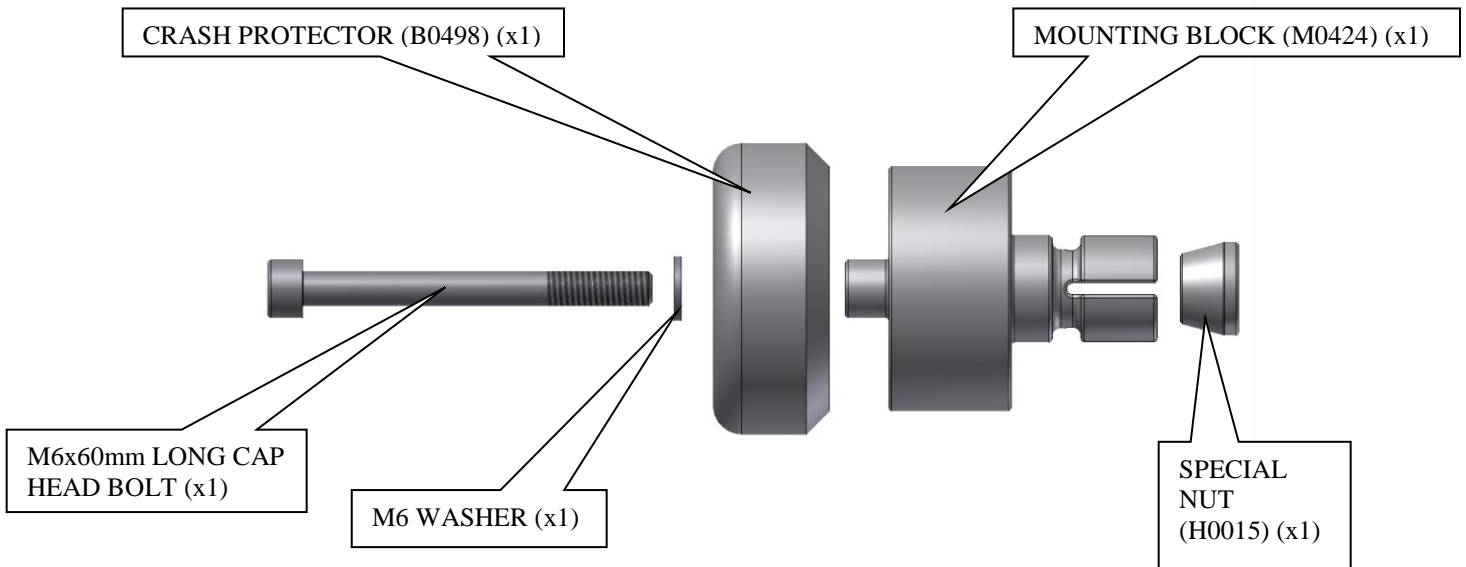
**FITTING INSTRUCTIONS FOR SP0065BK SWING-ARM PROTECTORS**  
**HUSQVARNA FS 450 2015, CORSARO 1200/AVIO/CARBON/VELOCE '05-07,**  
**ZZ '17- / ZT '18-**



**THIS KIT CONTAINS THE ITEMS PICTURED AND LABELLED BELOW.**  
**DO NOT PROCEED UNTIL YOU ARE SURE ALL PARTS ARE PRESENT.**

Please note that the way the kit is packed does not necessarily represent the way of mounting to the bike

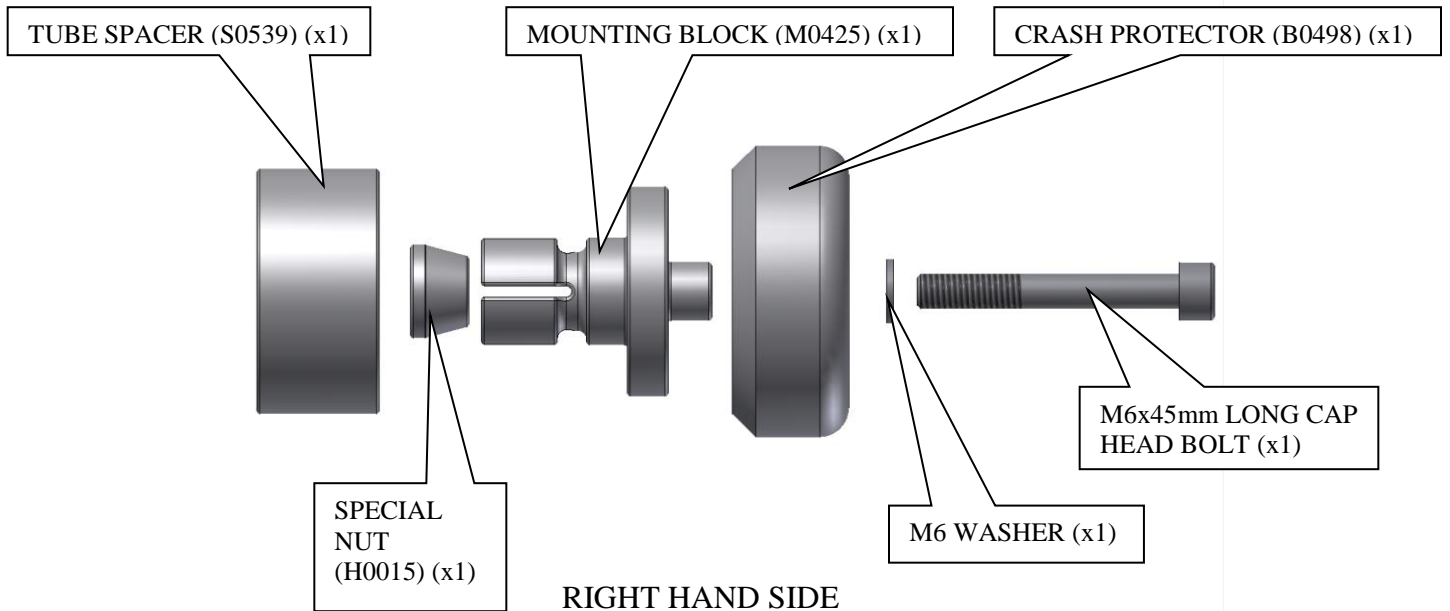
THE PARTS SHOWN MAY BE REPRESENTATIVE ONLY (FOR CLARITY OF INSTRUCTIONS ONLY)



**LEFT HAND SIDE**

R&G Racing  
 Unit 1, Shelleys Lane, East Worldham, Alton, Hampshire, GU34 3AQ

Tel: +44 (0) 1420 89007 | Fax : +44 (0) 1420 87301 | Email: info@rg-racing.com



Please note that in cases where kits are packed with rubber washers holding the components onto the bolt – *the rubber washers should be thrown away!*

#### **TOOLS REQUIRED**

- 5mm metric Allen key.

#### **Left-hand side (as you sit on bike)**

- Fit one of the M6 washers over the longest cap head bolt.
- Fit the longer cap headed bolt with washer through one of the crash protectors so head sits in counter-bore.
- Place the crash protector assembly on to the larger mounting block.
- Place one of the special nuts on exposed end of bolt so tapered face goes into recess of the mounting block.
- Tighten bolt until tapered portion of nut just contacts in the recessed face of the mounting block.
- Place this assembly into the left hand side of the rear wheel spindle.
- Tighten the bolt so crash protector is held in position firmly (do not over tighten).
- **Regularly check to ensure crash protector remains tight.**

#### **Right-hand side (as you sit on bike)**

- Place the tube spacer over the original wheel spindle nut.
- Fit the remaining M6 washer over the shortest cap head bolt.
- Fit the shorter cap headed bolt with washer through the remaining crash protector so head sits in counter-bore.

R&G Racing  
Unit 1, Shelleys Lane, East Worldham, Alton, Hampshire, GU34 3AQ

Tel: +44 (0) 1420 89007 | Fax : +44 (0) 1420 87301 | Email: info@rg-racing.com



- Place the crash protector assembly on to the smaller mounting block.
  - Place the remaining special nut on exposed end of bolt so tapered face goes into recess of the mounting block.
  - Tighten bolt until tapered portion of nut just contacts in the recessed face of the mounting block.
  - Place this assembly into the right hand side of the rear wheel spindle.
  - Tighten the bolt so crash protector is held in position firmly (do not over tighten).
  - **Regularly check to ensure crash protector remains tight.**
- **GENERAL TORQUE SETTINGS**
    - M4 BOLT = 8Nm
    - M5 BOLT = 12Nm
    - M6 BOLT = 15Nm
    - M8 BOLT = 20Nm
    - M10 BOLT = 40Nm
    - M12 NYLOC NUT = 40Nm

**Digital copies of these instructions are available to download from [www.rg-racing.com](http://www.rg-racing.com)**

Issue 1 13/03/2015 (NSY)

#### **CONSUMER NOTICE**

The catalogue description and any exhibition of samples are only broad indications of the Products and R&G may make design changes which do not diminish their performance or visual appeal and supplying them in such state shall conform to the order. The Buyer acknowledges no representation or warranty (other than as to title) has been given or will apply to the Products other than those in R&G's order or confirmation and the Buyer confirms it has chosen the Products as being of merchantable quality and suitable for its particular purposes. Where R&G fits the Products or undertakes other services it shall exercise reasonable skill and care and rectify any fault free of charge unless the workmanship has been disturbed. The Buyer is responsible for ensuring that the warranty on the motorcycle is not affected by the fitting of the Products. On return of any defective Products R&G shall at its option either supply a replacement or refund the purchase money but shall not be liable if the Products have been modified or used or maintained otherwise than in accordance with R&G's or manufacturer's instructions and good engineering practice or if the defect arises from accident or neglect. Other than identified above and subject to R&G not limiting its liability for causing death and personal injury, it shall not be liable for indirect or consequential loss and otherwise its liability shall be limited to the amounts paid by the Buyer for the Products or the fitting or service concerned. These terms do not affect the Buyer's statutory rights.

#### **R&G RACING RETURNS POLICY (NON-FAULTY GOODS)**

Returns must be pre-authorized (if not pre-authorized the return will be rejected). Goods may only be returned direct to us if they were purchased direct from us (customer must prove if necessary). Otherwise to be returned to original vendor. Goods must be in re-sellable condition, in the opinion of R&G Racing. All returns are subject to a 25% restocking and handling fee (25% of the gross value exc. P&P – at the prevailing price at time of purchase). The customer must pay any and all carriage charges. No returns of discontinued products, unless within 14 days of purchase. This policy does not affect your statutory rights and does not refer to faulty goods.

R&G Racing  
Unit 1, Shelleys Lane, East Worldham, Alton, Hampshire, GU34 3AQ

Tel: +44 (0) 1420 89007 | Fax : +44 (0) 1420 87301 | Email: [info@rg-racing.com](mailto:info@rg-racing.com)



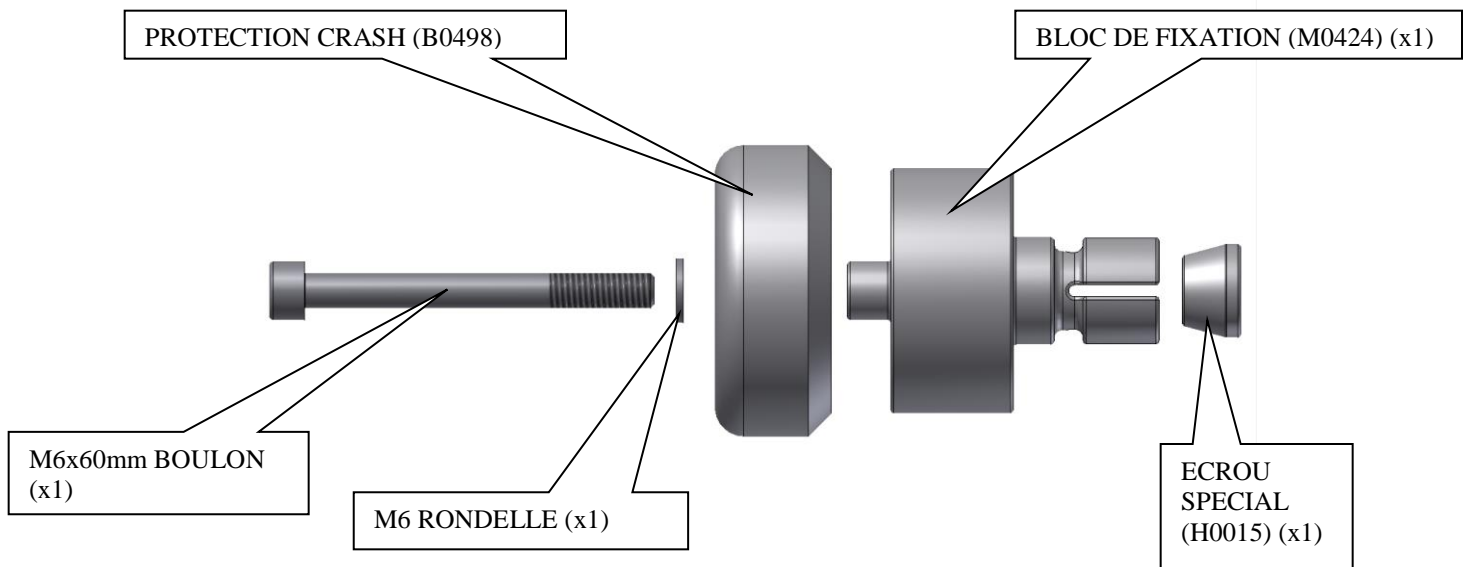
**INSTRUCTIONS DE MONTAGE POUR SP0065BK PROTECTION BRAS  
OSCILLANT  
HUSQVARNA FS 450 2015- , CORSARO 1200/AVIO/CARBON/VELOCE '05-07,  
ZZ '17- / ZT '18-**



**Le kit contient les articles exposés ci-dessous, vérifier que toutes les pièces soient présentes avant de procéder au montage.**

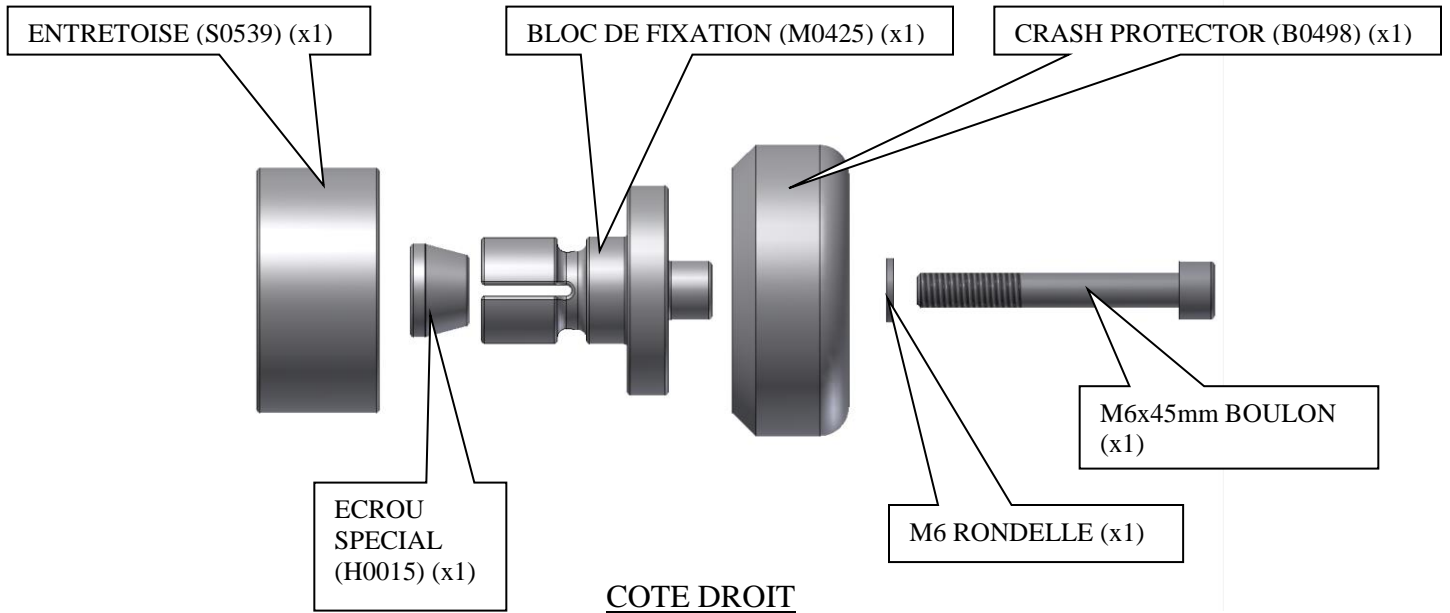
**La façon dont le kit est emballé ne correspond pas forcément à la façon de monter les pièces sur la moto.**

**LES PARTIES PRESENTEES PEUVENT ETRE UNIQUEMENT REPRESENTATIVES  
(POUR LA CLARTE DES INSTRUCTIONS UNIQUEMENT)**





## COTE GAUCHE



Notez que si les kits sont emballés avec des rondelles en caoutchouc servant à tenir les composants, *ces rondelles doivent être jetées.*

### Outils requis

- Clé Allen 5mm.

### Coté gauche (lorsqu'on est assis sur la moto)

- Insérer une des rondelles M6 sur le boulon.
- Insérer le boulon et sa rondelle dans la protection crash, afin que la tête se place dans le contre alésage.
- Placer l'ensemble protection crash sur le bloc de fixation le plus large.
- Placer un des écrous spéciaux sur l'extrémité du boulon de façon à ce que la face conique se place dans le creux du bloc de fixation.
- Serrer le boulon jusqu'à ce que la partie conique de l'écrou vienne toucher le creux du bloc de fixation.
- Placer cet ensemble du coté gauche du moyeu de roue arrière.
- Serrer le boulon pour que la protection crash soit maintenue en position (ne pas trop bloquer).
- **Vérifier le serrage régulièrement.**

### Coté droit (lorsqu'on est assis sur la moto)

R&G Racing  
Unit 1, Shelleys Lane, East Worldham, Alton, Hampshire, GU34 3AQ

Tel: +44 (0) 1420 89007 | Fax : +44 (0) 1420 87301 | Email: info@rg-racing.com



- Placer l'entretoise en forme de tube sur l'écrou d'origine du moyeu.
- Placer la rondelle M6 restante sur le boulon le plus court.
- Insérer le boulon et sa rondelle dans la protection crash restante, afin que la tête se place dans le contre alésage.
- Placer l'ensemble protection crash sur le bloc de fixation le moins large.
- Placer l'écrou spécial restant sur l'extrémité du boulon de façon à ce que la face conique se place dans le creux du bloc de fixation.
- Serrer le boulon jusqu'à ce que la partie conique de l'écrou vienne toucher le creux du bloc de fixation.
- Placer cet ensemble du coté droit du moyeu de roue arrière.
- Serrer le boulon pour que la protection crash soit maintenue en position (ne pas trop bloquer).
- **Vérifier le serrage régulièrement.**

### **COUPLES DE SERRAGE**

- M4 BOULON = 8Nm
- M5 BOULON = 12Nm
- M6 BOULON = 15Nm
- M8 BOULON = 20Nm
- M10 BOULON = 40Nm
- M12 ECROU = 40Nm

**Ces instructions de montage sont disponibles sur [www.rg-racing.com](http://www.rg-racing.com)**

Issue 1 13/03/2015 (NSY)

### **CONSUMER NOTICE**

The catalogue description and any exhibition of samples are only broad indications of the Products and R&G may make design changes which do not diminish their performance or visual appeal and supplying them in such state shall conform to the order. The Buyer acknowledges no representation or warranty (other than as to title) has been given or will apply to the Products other than those in R&G's order or confirmation and the Buyer confirms it has chosen the Products as being of merchantable quality and suitable for its particular purposes. Where R&G fits the Products or undertakes other services it shall exercise reasonable skill and care and rectify any fault free of charge unless the workmanship has been disturbed. The Buyer is responsible for ensuring that the warranty on the motorcycle is not affected by the fitting of the Products. On return of any defective Products R&G shall at its option either supply a replacement or refund the purchase money but shall not be liable if the Products have been modified or used or maintained otherwise than in accordance with R&G's or manufacturer's instructions and good engineering practice or if the defect arises from accident or neglect. Other than identified above and subject to R&G not limiting its liability for causing death and personal injury, it shall not be liable for indirect or consequential loss and otherwise its liability shall be limited to the amounts paid by the Buyer for the Products or the fitting or service concerned. These terms do not affect the Buyer's statutory rights.

### **R&G RACING RETURNS POLICY (NON-FAULTY GOODS)**

Returns must be pre-authorized (if not pre-authorized the return will be rejected). Goods may only be returned direct to us if they were purchased direct from us (customer must prove if necessary). Otherwise to be returned to original vendor. Goods must be in resellable condition, in the opinion of R&G Racing. All returns are subject to a 25% restocking and handling fee (25% of the gross value exc. P&P – at the prevailing price at time of purchase). The customer must pay any and all carriage charges. No returns of discontinued products, unless within 14 days of purchase. This policy does not affect your statutory rights and does not refer to faulty goods.

R&G Racing  
Unit 1, Shelleys Lane, East Worldham, Alton, Hampshire, GU34 3AQ

Tel: +44 (0) 1420 89007 | Fax : +44 (0) 1420 87301 | Email: [info@rg-racing.com](mailto:info@rg-racing.com)



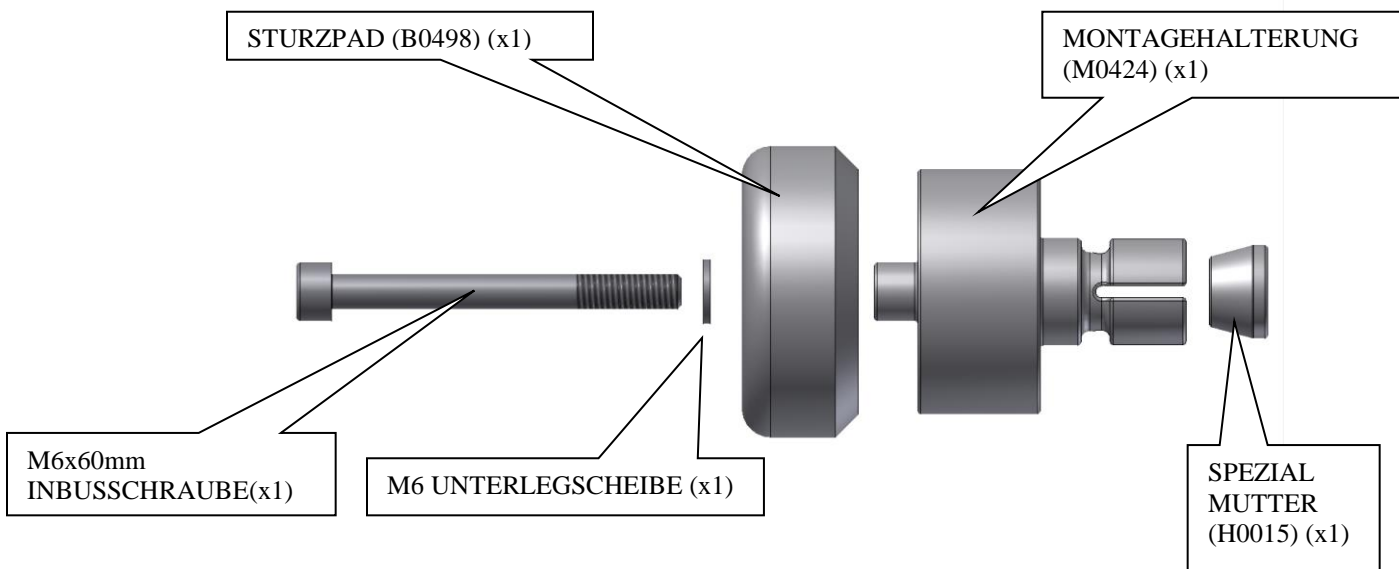
**MONTAGEANLEITUNG FÜR SP0065BK SCHWINGENPROTEKTOREN  
HUSQVARNA FS 450 2015-, CORSARO 1200/AVIO/CARBON/VELOCE '05-07,  
ZZ '17- / ZT '18-**



**ALLE TEILE SIND UNTEN ABGEBILDET UND GEKENNZEICHNET. BEVOR SIE  
MIT DER MONTAGE BEGINNEN, ÜBERPRÜFEN SIE, DASS ALLE TEILE  
VORHANDEN SIND.**

**Hinweis: Die Verpackung der Teile stellt nicht die Reihenfolge der Montage dar.**

DIE UNTEN ABGEBILDETEN TEILE DIENEN LEDIGLICH ZUR ERKLÄRUNG

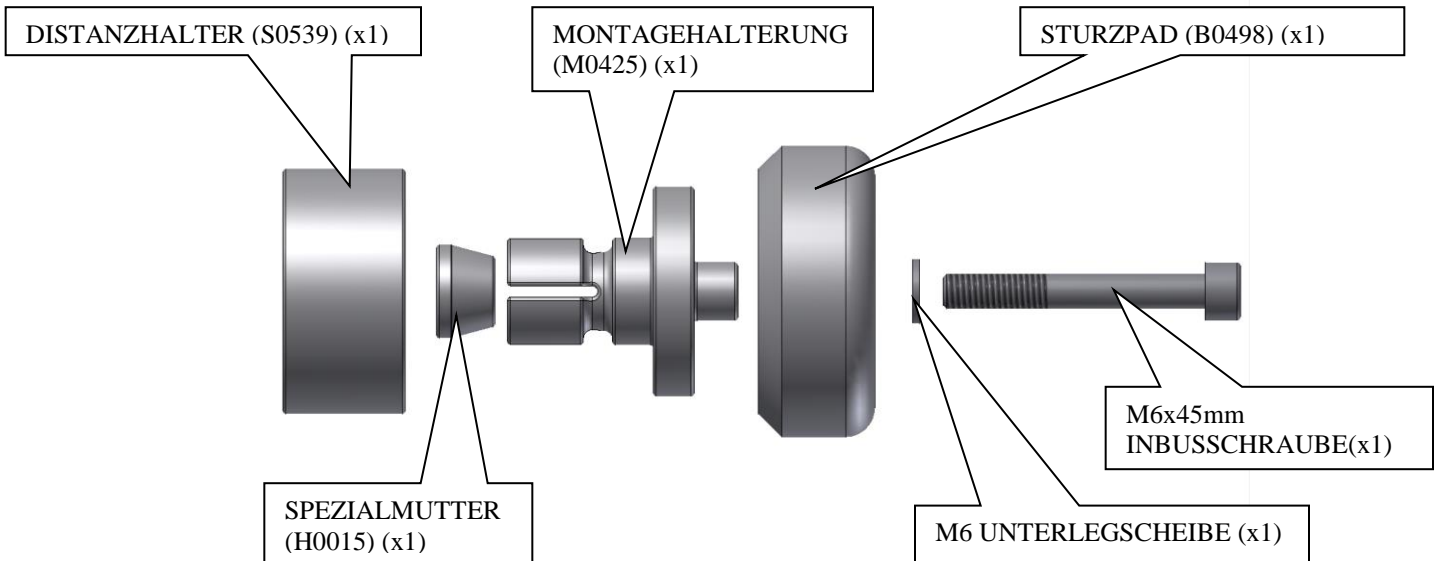


Unit 1, Shelleys Lane, East Worldham, Alton, Hampshire, GU34 3AQ

Tel: +44 (0) 1420 89007 | Fax : +44 (0) 1420 87301 | Email: info@rg-racing.com



### LINKE SEITE



### RECHTE SEITE

Hinweis für Kits mit Plastikunterlegscheiben an den Schrauben – *Diese Plastikunterlegscheiben werden nicht für den Einbau benötigt!*

### SIE BENÖTIGEN FOLGENDES WERKZEUG:

- 5mm Inbusschlüssel

### Linke Seite (in Fahrtrichtung)

- Eine M6 Unterschreibe an der längeren Inbusschraube anbringen.
- Führen Sie die längere Inbusschraube in ein Sturzpad ein, so dass der Schraubenkopf in der Senkbohrung sitzt.
- Das Sturzpad an der großen Montagehalterung anbringen.
- Die Spezialmutter am Schraubenende anbringen, sodass die gestufte Fläche in den Ausschnitt der Montagehalterung reinpasst.
- Ziehen Sie die Schraube fest, bis die gestufte Fläche der Mutter die Ausschnittfläche der Montagehalterung berührt.
- Diese Einheit in die linke Seite der Hinterradachse einführen.
- Ziehen Sie die Schraube fest, um das Sturzpad in Position zu befestigen (nicht überdrehen).
- **Überprüfen Sie regelmäßig, dass der Schwingenprotektor noch fest fixiert ist.**

### Rechte Seite (in Fahrtrichtung)

- Das Distanzrohr an der original Spindelmutter/Achsmutter anbringen.
- Die übrige M6 Unterschreibe an der kurzen Inbusschraube anbringen.

R&G Racing  
Unit 1, Shelleys Lane, East Worldham, Alton, Hampshire, GU34 3AQ

Tel: +44 (0) 1420 89007 | Fax : +44 (0) 1420 87301 | Email: info@rg-racing.com





- Führen Sie die kurze Inbusschraube in das übrige Sturzpad ein, so dass der Schraubenkopf in der Senkbohrung sitzt.
- Das Sturzpad an der kleineren Montagehalterung anbringen.
- Die Spezialmutter am Schraubenende anbringen, sodass die gestufte Fläche in den Ausschnitt der Montagehalterung reinpasst.
- Ziehen Sie die Schraube fest, bis die gestufte Fläche der Mutter die Ausschnittfläche der Montagehalterung berührt.
- Diese Einheit in die rechte Seite der Hinterradachse einführen.
- Ziehen Sie die Schraube fest, um das Sturzpad in Position zu befestigen (nicht überdrehen).
- **Überprüfen Sie regelmäßig, dass der Schwingenprotector noch fest fixiert ist.**

#### **ANZUGSDREHMOMENTE:**

- M4 SCHRAUBE = 8Nm
- M5 SCHRAUBE = 12Nm
- M6 SCHRAUBE = 15Nm
- M8 SCHRAUBE = 20Nm
- M10 SCHRAUBE = 40Nm
- M12 SELBSTSICHERNDE MUTTER = 40Nm

**Eine digitale Version dieser Montageanleitung kann auf folgender Seite heruntergeladen werden:**

[www.rg-racing.com](http://www.rg-racing.com)

Ausgabe 1 13/03/2015 (NSY)

#### **CONSUMER NOTICE**

The catalogue description and any exhibition of samples are only broad indications of the Products and R&G may make design changes which do not diminish their performance or visual appeal and supplying them in such state shall conform to the order. The Buyer acknowledges no representation or warranty (other than as to title) has been given or will apply to the Products other than those in R&G's order or confirmation and the Buyer confirms it has chosen the Products as being of merchantable quality and suitable for its particular purposes. Where R&G fits the Products or undertakes other services it shall exercise reasonable skill and care and rectify any fault free of charge unless the workmanship has been disturbed. The Buyer is responsible for ensuring that the warranty on the motorcycle is not affected by the fitting of the Products. On return of any defective Products R&G shall at its option either supply a replacement or refund the purchase money but shall not be liable if the Products have been modified or used or maintained otherwise than in accordance with R&G's or manufacturer's instructions and good engineering practice or if the defect arises from accident or neglect. Other than identified above and subject to R&G not limiting its liability for causing death and personal injury, it shall not be liable for indirect or consequential loss and otherwise its liability shall be limited to the amounts paid by the Buyer for the Products or the fitting or service concerned. These terms do not affect the Buyer's statutory rights.

#### **R&G RACING RETURNS POLICY (NON-FAULTY GOODS)**

Returns must be pre-authorized (if not pre-authorized the return will be rejected). Goods may only be returned direct to us if they were purchased direct from us (customer must prove if necessary). Otherwise to be returned to original vendor. Goods must be in re-sellable condition, in the opinion of R&G Racing. All returns are subject to a 25% restocking and handling fee (25% of the gross value exc. P&P – at the prevailing price at time of purchase). The customer must pay any and all carriage charges. No returns of discontinued products, unless within 14 days of purchase. This policy does not affect your statutory rights and does not refer to faulty goods.

R&G Racing  
Unit 1, Shelleys Lane, East Worldham, Alton, Hampshire, GU34 3AQ

Tel: +44 (0) 1420 89007 | Fax : +44 (0) 1420 87301 | Email: info@rg-racing.com